

FERNANDINA HARBOR NASSAU COUNTY, FLORIDA HYDROGRAPHIC EXAM SURVEY FY22 28, 35 & 36-FOOT PROJECT

SURVEY NOTES

- REFER TO SURVEY NO. 22-100.
 - DEPTHS DEPICTED BY THIS SURVEY ARE REFERENCED TO MLLW, TIDAL EPOCH 1983-2001, AS PUBLISHED BY THE NATIONAL OCEANIC AND ATMOSPHERIC ADMINISTRATION (NOAA).
 - NOAA'S VDATUM MODEL AND PUBLISHED TIDE STATION DATA, WERE USED TO GENERATE A HYPACK KINEMATIC TIDE DATUM (KTD) MODEL. THIS KTD MODEL, BEING A COMBINATION OF THOSE TWO SOURCES, CANNOT BE CONSIDERED EQUIVALENT TO THE VDATUM MODEL BECAUSE OF POSSIBLE ADDITIONS OR EDITS THERETO. DO NOT USE VDATUM IN PLACE OF THE KTD FILE. THE KTD MODEL USED FOR THIS SURVEY IS:
CAMDENGA-NASSAU-DUVAL-STJOHNS-FLAGLER_20191202.KTD
 - TIDAL REDUCTIONS WERE OBTAINED UTILIZING A REAL-TIME KINEMATIC (RTK) GPS AND REFERENCED TO MLLW UTILIZING THE KTD FILE REFERENCED ABOVE, AND CALIBRATED TO THE PUBLISHED MLLW HEIGHTS OF THE BENCHMARKS ASSOCIATED WITH THE TIDE GAGE SITES SPECIFIED BELOW:

NOAA TIDAL STATION 872-0030, FERNANDINA BEACH, AMELIA RIVER, FL
 - ALL ELEVATIONS ARE BELOW THE CHART DATUM UNLESS PRECEDED BY A (+) SIGN.
 - PLANE COORDINATES ARE BASED ON THE TRANSVERSE MERCATOR PROJECTION FOR THE EAST ZONE OF FLORIDA AND REFERENCED TO NORTH AMERICAN DATUM OF 1983 (NAD83).
 - ALL STATIONING REFERS TO THE CENTERLINE OF THE CHANNEL.
 - THIS SURVEY WAS PERFORMED USING REAL-TIME KINEMATIC (RTK) GPS POSITIONING WITH THE FOLLOWING REFERENCE BASE LOCATION:

REFERENCE BASE LOCATED AT "BATH HOUSE ARP" (OPUS PID: BBCB08) FOR CUTS 1 - 4
REFERENCE BASE LOCATED AT "RICHARD E BONNER" (OPUS PID: BBCK39) FOR CUTS 5 - 10

TIDE STAFF WAS SET ON THE SOUTH END OF THE CONSOLIDATED FUEL DOCK, NORTH OF FERNANDINA MUNICIPAL MARINA, FROM "RICHARD E BONNER" (PID: BBCK39)
 - VERTICAL MEASUREMENTS WERE MADE USING A RESON MODEL T50P MULT-BEAM SYSTEM OPERATING AT 400 KHZ AND A ROSS SMART SOUNDER MODEL 835C WITH A DUAL-FREQUENCY 28/200 KHZ SINGLE-BEAM TRANSDUCER. ALL SOUNDINGS SHOWN ARE IN HIGH FREQUENCY (400 KHZ).
- | VESSEL | DATE OF SURVEY | AREA SURVEYED |
|--------|----------------|--|
| SB-36 | 18 APR 2022 | CUT-1 THRU CUT-4 |
| SB-36 | 20 APR 2022 | CUTS 5, 6, 6A, 7, 8, 9 (PARTIAL) AND TURNING BASIN |
| SB-36 | 21 APR 2022 | CUTS 8, 9 (PARTIAL) & CUT-10 |
- AIDS TO NAVIGATION WERE LOCATED DURING THIS SURVEY.
 - THE INFORMATION DEPICTED ON THIS MAP REPRESENTS THE RESULTS OF SURVEYS MADE ON THE DATES INDICATED ABOVE AND CAN ONLY BE CONSIDERED AS INDICATING THE GENERAL CONDITIONS AT THAT TIME. THIS CHART IS SOLELY FOR THE DISTRIBUTION OF AVAILABLE DEPTHS AT THE TIME OF THE SURVEY.
 - SURVEY ACCURACY PERFORMANCE STANDARDS, QUALITY CONTROL, AND QUALITY ASSURANCE REQUIREMENTS WERE FOLLOWED DURING THIS SURVEY IN ACCORDANCE WITH USACE EM 1110-2-1003, HYDROGRAPHIC SURVEYING, 30 NOV 2013 AND EM 1110-2-6056, STANDARDS AND PROCEDURES FOR REFERENCING PROJECT ELEVATION GRADES TO NATIONWIDE VERTICAL DATUMS, 31 DEC 2010.

LEGEND	
	MONUMENT
	LIGHTED BEACON
	GREEN DAYBEACON
	RED DAYBEACON
	RED LIGHTED BUOY
	GREEN LIGHTED BUOY
	CAN BUOY
	NUN BUOY
	TIDE STAFF
	PROJECT DEPTH

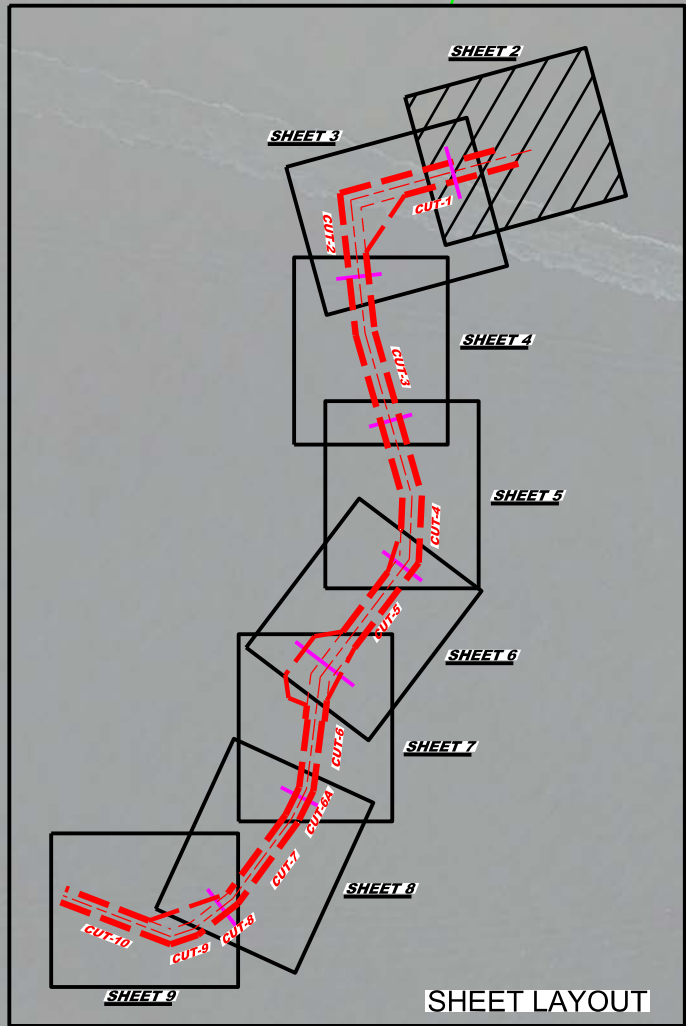
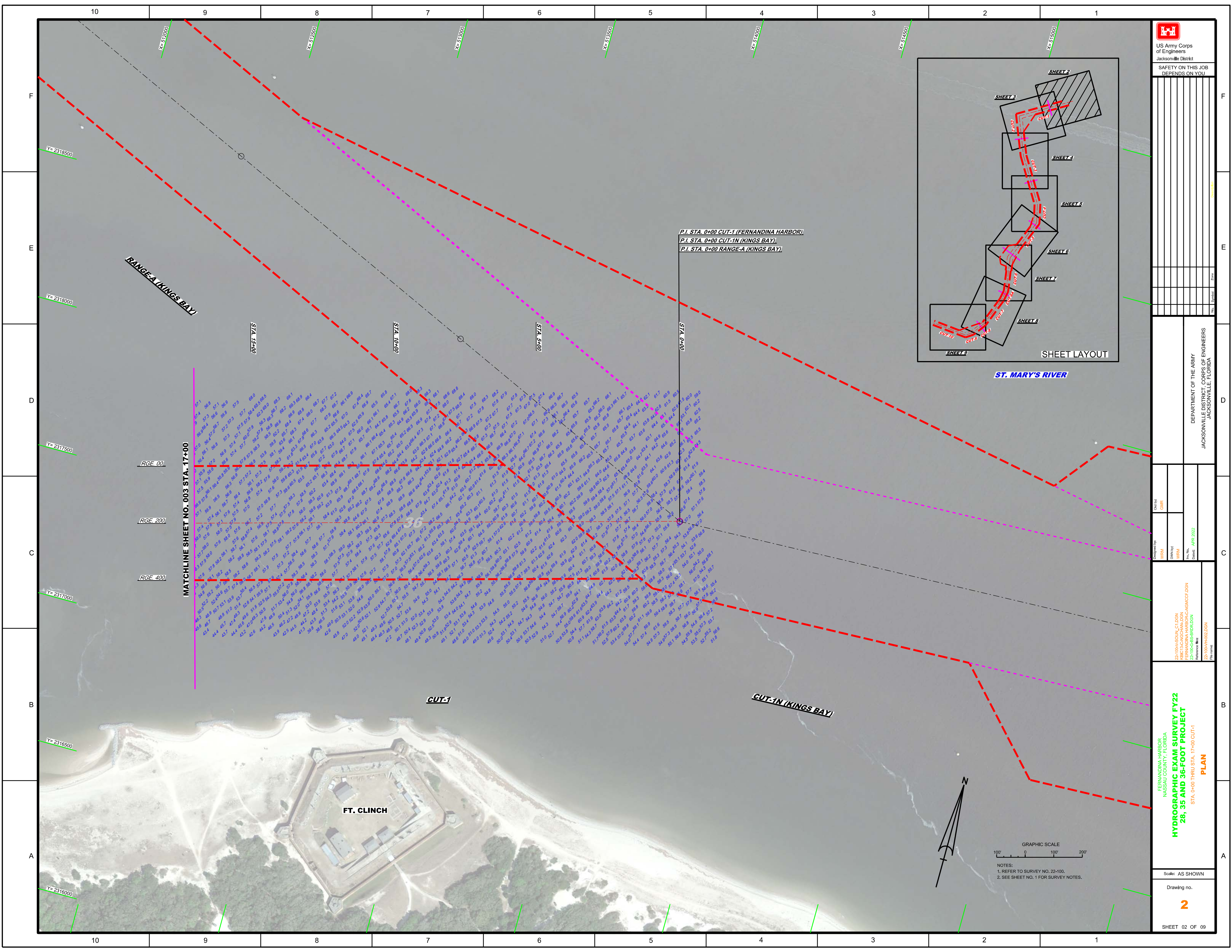
US Army Corps of Engineers
Jacksonville District
SAFETY ON THIS JOB
DEPENDS ON YOU

DESIGNED BY: WRM
CHECKED BY: GHR
DATE: APR 2022

22-100-INDEX.DGN
22-100-28-35-36-FOOT-PROJECT-INDEX-LOCATION-AND-VICINITY-MAP
22-100-35-36-36-FOOT-PROJECT-INDEX-LOCATION-AND-VICINITY-MAP

FERNANDINA HARBOR
NASSAU COUNTY, FLORIDA
HYDROGRAPHIC EXAM SURVEY FY22
28, 35 AND 36-FOOT PROJECT
INDEX, LOCATION AND VICINITY
MAP

Scale: AS SHOWN
Drawing no. 1
SHEET 01 OF 09



P.I. STA. 0+00 CUT-1 (FERNANDINA HARBOR)
 P.I. STA. 0+00 CUT-IN (KINGS BAY)
 P.I. STA. 0+00 RANGE-A (KINGS BAY)

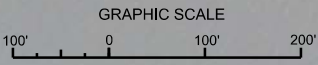
MATCHLINE SHEET NO. 003 STA. 17+00

RGE. 00
 RGE. 200
 RGE. 400

CUT-1

CUT-IN (KINGS BAY)

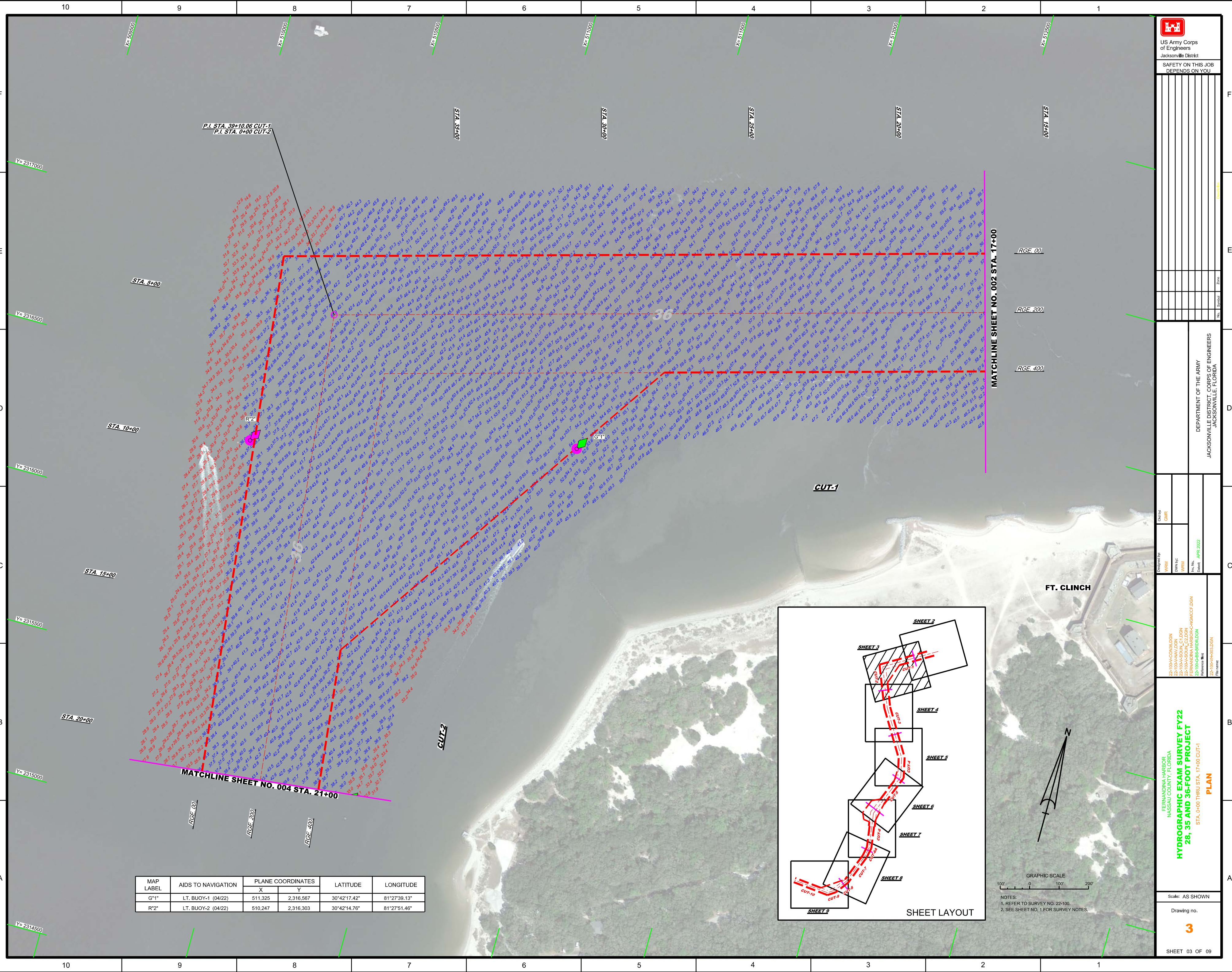
FT. CLINCH



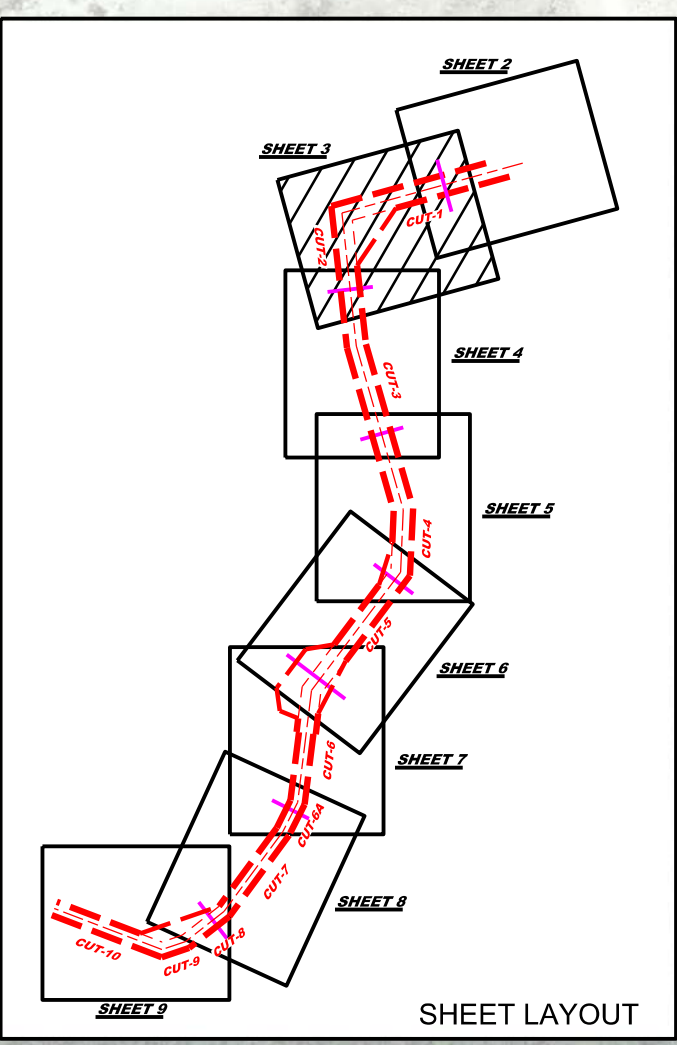
NOTES:
 1. REFER TO SURVEY NO. 22-100.
 2. SEE SHEET NO. 1 FOR SURVEY NOTES.



<p>US Army Corps of Engineers Jacksonville District SAFETY ON THIS JOB DEPENDS ON YOU</p>	
<p>DEPARTMENT OF THE ARMY JACKSONVILLE DISTRICT, CORPS OF ENGINEERS JACKSONVILLE, FLORIDA</p>	
<p>Checked By: GHR</p>	<p>Designed By: WRM</p>
<p>Drawn By: WRM</p>	<p>Scale: AS SHOWN</p>
<p>22-100A-SOUL_C1.DWG FERNANDINA HARBOR-CANAL-CONCEPT.DWG Reference: 22-100A-SB-BRIDGES</p>	<p>22-100A-HR02.DGN File name:</p>
<p>FERNANDINA HARBOR NASSAU COUNTY, FLORIDA HYDROGRAPHIC EXAM SURVEY FY22 28, 35 AND 36-FOOT PROJECT STA. 0+00 THRU STA. 17+00 CUT-1 PLAN</p>	
<p>Drawing no. 2</p>	
<p>SHEET 02 OF 09</p>	



MAP LABEL	AIDS TO NAVIGATION	PLANE COORDINATES		LATITUDE	LONGITUDE
		X	Y		
G*1*	LT. BUOY-1 (04/22)	511.325	2,316.567	30°42'17.42"	81°27'39.13"
R*2*	LT. BUOY-2 (04/22)	510.247	2,316.303	30°42'14.76"	81°27'51.46"



DEPARTMENT OF THE ARMY
JACKSONVILLE DISTRICT, CORPS OF ENGINEERS
JACKSONVILLE, FLORIDA

22-100A-CONCUBDGN
22-100A-AV-DGN
22-100A-SOIL_C1-DGN
22-100A-HARBOR-CANAL-DGN
22-100A-BS-BRD-DGN
Reference File:
22-100A-HARBOR-DGN

FERNANDINA HARBOR
NASSAU COUNTY, FLORIDA
**HYDROGRAPHIC EXAM SURVEY FY22
28, 35 AND 36-FOOT PROJECT**
STA. 0+00 THRU STA. 17+00 CUT-1
PLAN

Scale: AS SHOWN
Drawing no.
3
SHEET 03 OF 09

MAP LABEL	AIDS TO NAVIGATION	PLANE COORDINATES		LATITUDE	LONGITUDE
		X	Y		
R*6"	LT. BUOY-6 (04/22)	511,425	2,310,650	30°41'18.85"	81°27'37.71"
G*7"	LT-7 (04/22)	511,983	2,310,637	30°41'18.75"	81°27'31.31"

US Army Corps of Engineers
Jacksonville District

SAFETY ON THIS JOB
DEPENDS ON YOU

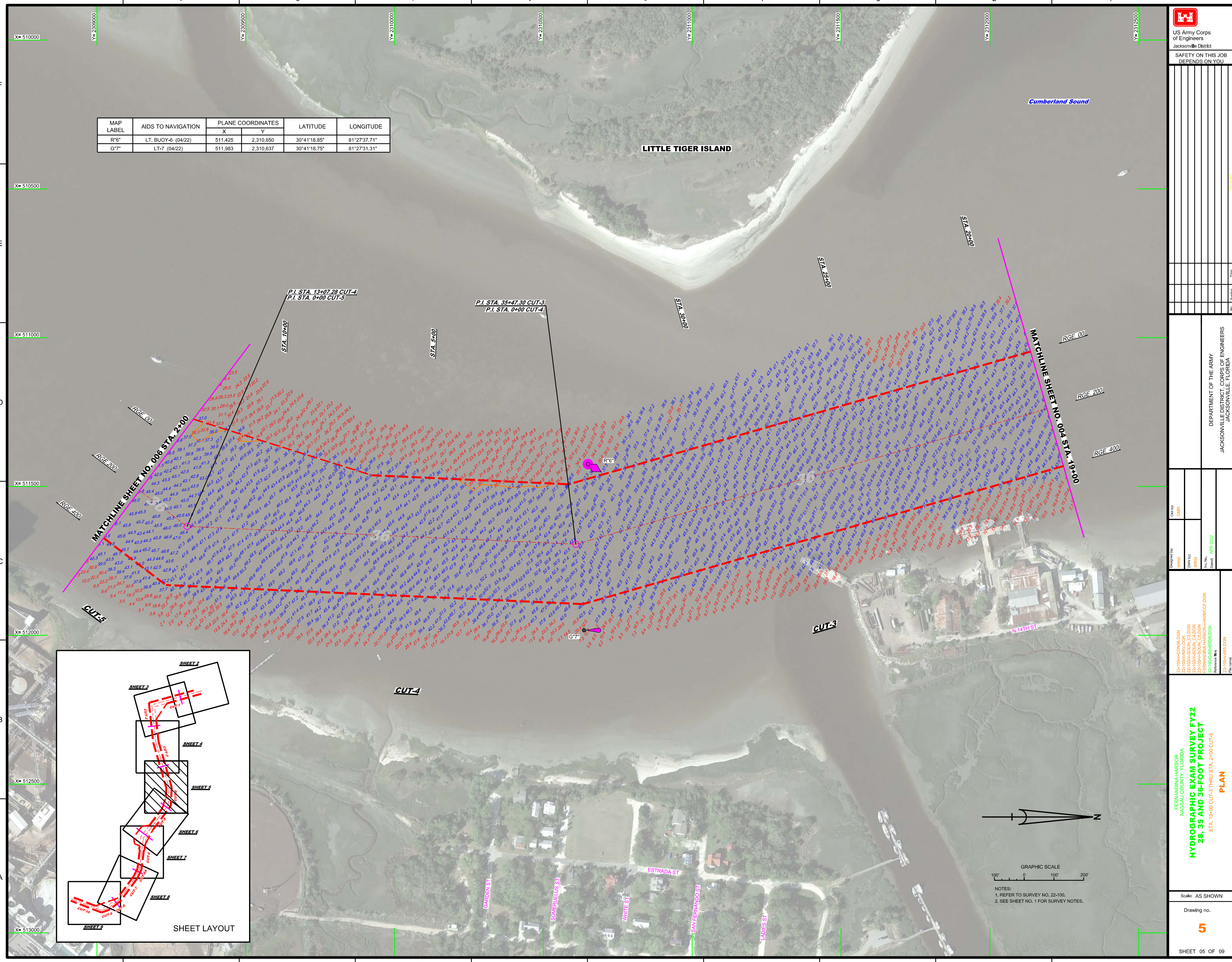
DEPARTMENT OF THE ARMY
JACKSONVILLE DISTRICT, CORPS OF ENGINEERS
JACKSONVILLE, FLORIDA

Drawn by: WRM
Checked by: GHR
Date: APR 2022

22-100A-CO-08-00N
22-100A-SO-04-00N
22-100A-SO-04-00N
22-100A-SO-04-00N
22-100A-SO-04-00N
22-100A-SO-04-00N
22-100A-SO-04-00N

FERNANDINA HARBOR
NASSAU COUNTY, FLORIDA
**HYDROGRAPHIC EXAM SURVEY FY22
28, 35 AND 36-FOOT PROJECT**
STA. 19+00 CUT-3 THRU STA. 2+00 CUT-5
PLAN


Scale: AS SHOWN
Drawing no. **5**
SHEET 05 OF 09



GRAPHIC SCALE
100' 0 100' 200'

NOTES:
1. REFER TO SURVEY NO. 22-100.
2. SEE SHEET NO. 1 FOR SURVEY NOTES.

MAP LABEL	AIDS TO NAVIGATION	PLANE COORDINATES		LATITUDE	LONGITUDE
		X	Y		
R8*	LT. BUOY-8 (04/22)	510,977	2,308,960	30°4'02.11"	81°27'42.76"



US Army Corps of Engineers
Jacksonville District
SAFETY ON THIS JOB
DEPENDS ON YOU

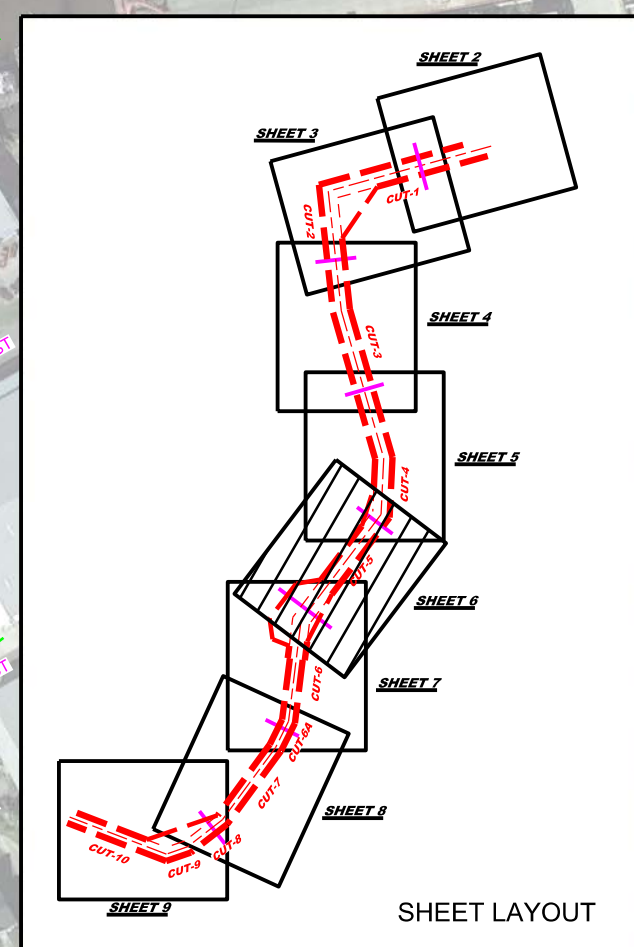
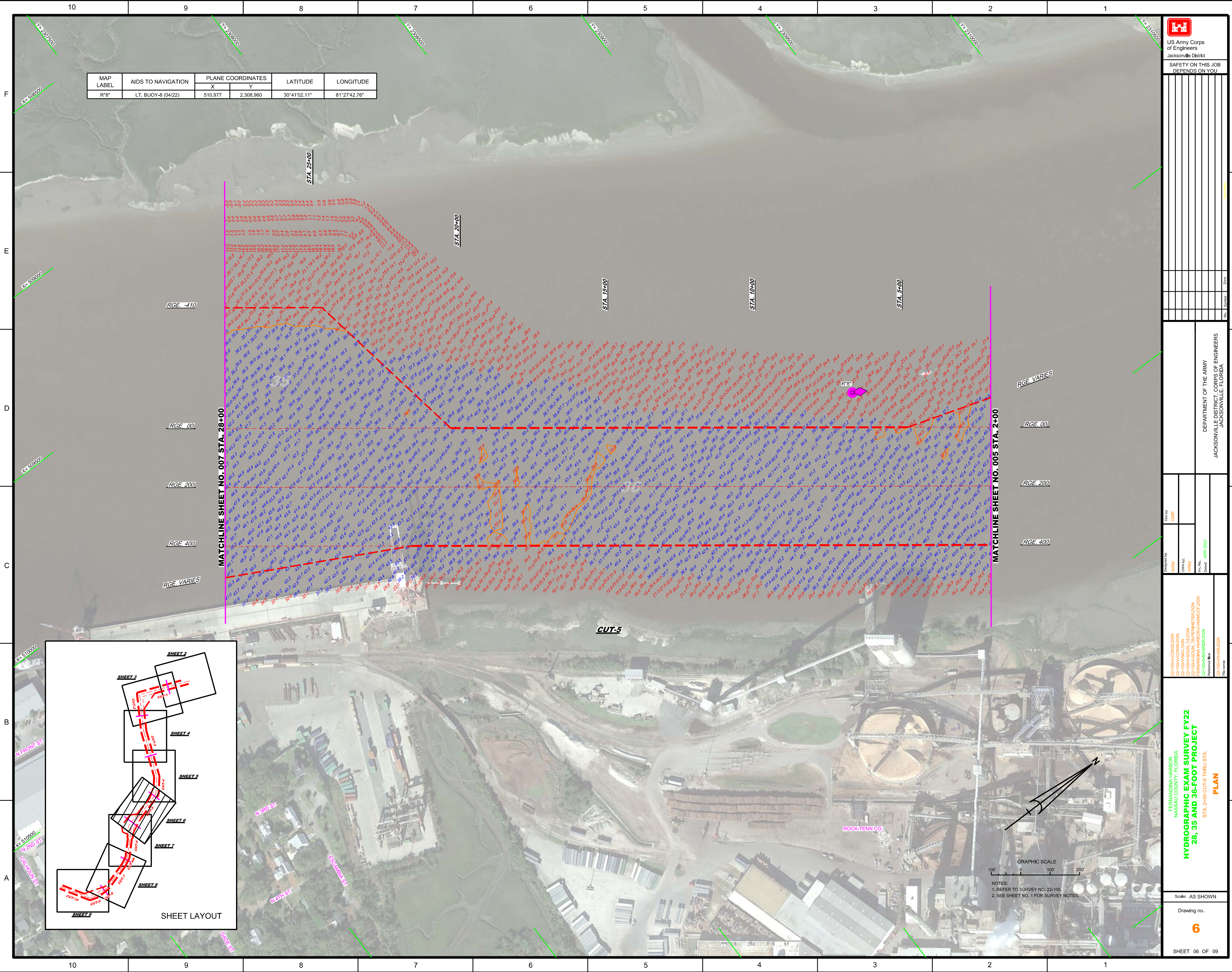
DEPARTMENT OF THE ARMY
JACKSONVILLE DISTRICT, CORPS OF ENGINEERS
JACKSONVILLE, FLORIDA

Designed by: WRM
Checked by: GHR
Drawn by: WRM
Scale: AS SHOWN
Date: APR 2022

22-100A-CONC/DON
22-100A-HAV/DON
22-100A-SOIL_COLDON
22-100A-VEG/DON
22-100A-RECON/DON
22-100A-ROCK/DON
22-100A-SPR/DON
22-100A-TRE/DON
22-100A-UTL/DON
22-100A-VAL/DON
22-100A-WATER/DON
22-100A-WOOD/DON
22-100A-YR/DON
22-100A-ZON/DON
22-100A-DEM/DON
22-100A-IMP/DON
22-100A-STR/DON
22-100A-CONC/DON
22-100A-HAV/DON
22-100A-SOIL_COLDON
22-100A-VEG/DON
22-100A-RECON/DON
22-100A-ROCK/DON
22-100A-SPR/DON
22-100A-TRE/DON
22-100A-UTL/DON
22-100A-VAL/DON
22-100A-WATER/DON
22-100A-WOOD/DON
22-100A-YR/DON
22-100A-ZON/DON
22-100A-DEM/DON
22-100A-IMP/DON
22-100A-STR/DON

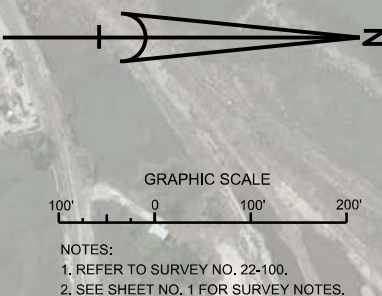
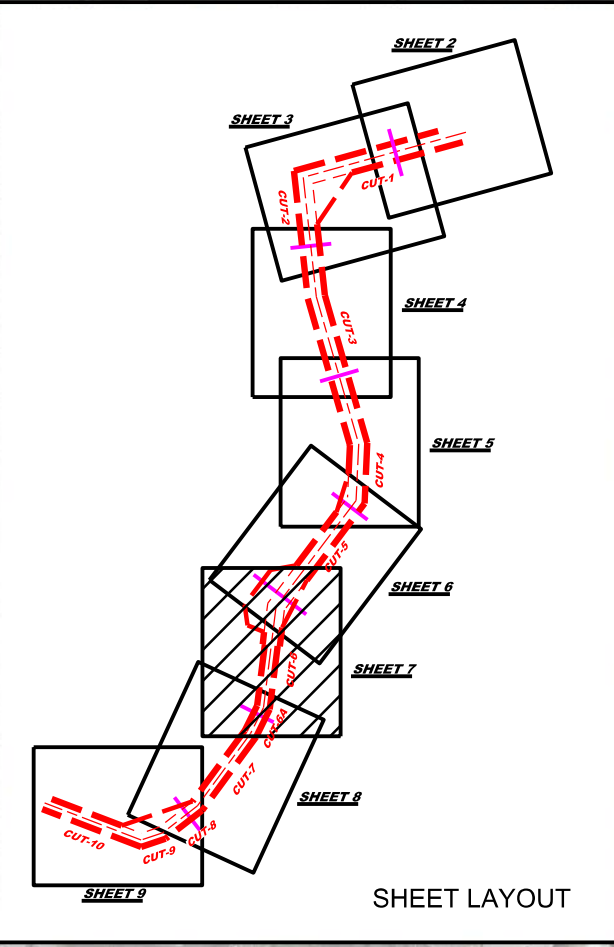
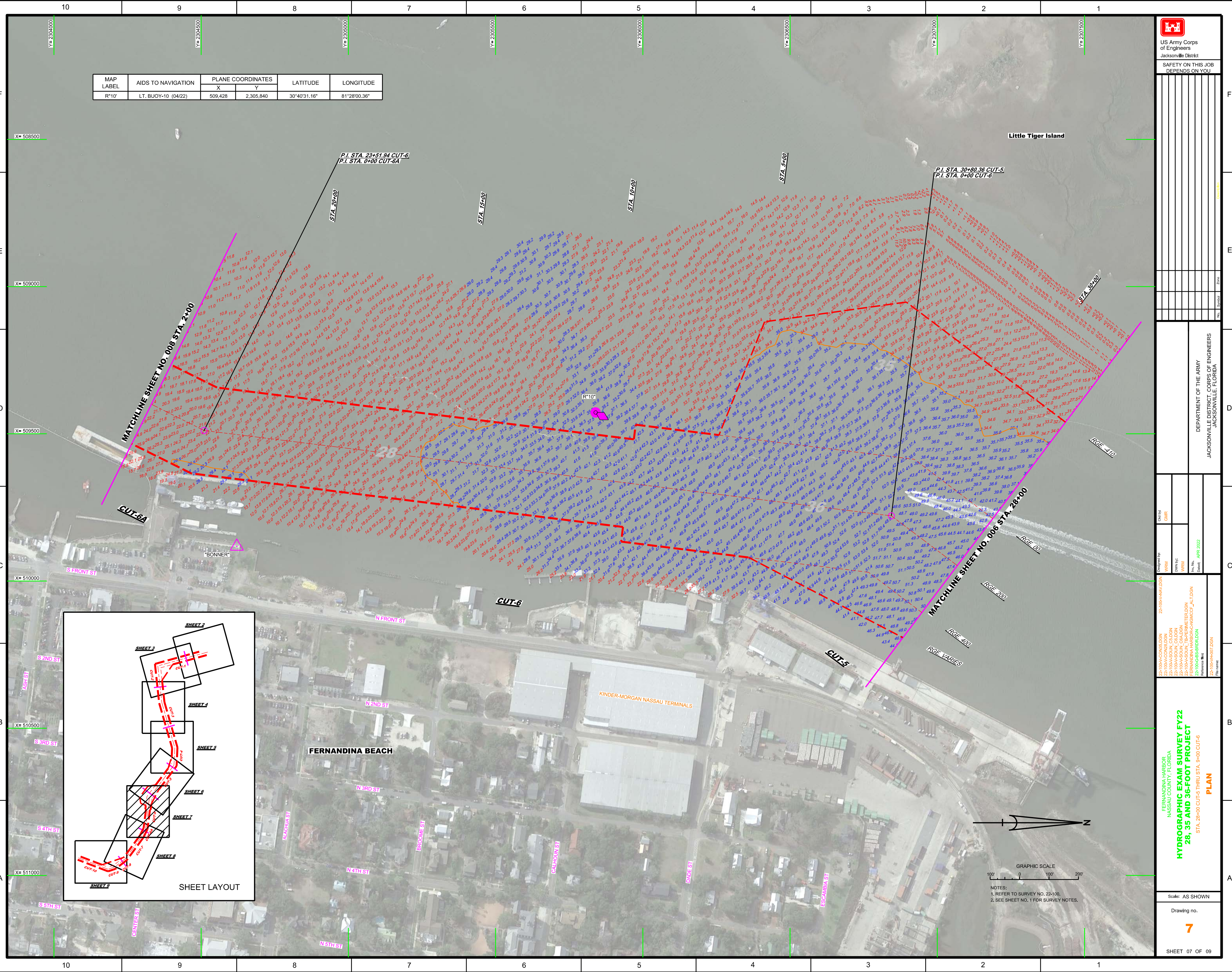
HYDROGRAPHIC EXAM SURVEY FY22
28, 35 AND 36-FOOT PROJECT
PLAN
STA. 2+00 CUT-5 THRU STA. 2+00

Scale: AS SHOWN
Drawing no. 6
SHEET 06 OF 09



GRAPHIC SCALE
0 100 200
NOTES:
1. REFER TO SURVEY NO. 22-100.
2. SEE SHEET NO. 1 FOR SURVEY NOTES.

MAP LABEL	AIDS TO NAVIGATION	PLANE COORDINATES		LATITUDE	LONGITUDE
		X	Y		
R110	LT. BUOY-10 (04/22)	509,428	2,305,840	30°40'31.16"	81°28'00.36"



DATE	BY	DESCRIPTION

DEPARTMENT OF THE ARMY
JACKSONVILLE DISTRICT, CORPS OF ENGINEERS
JACKSONVILLE, FLORIDA

Checked By: GHR
Designed By: Z2-100-VAN/DON
Drawn By: WRM
Reviewed By: WRM
Project No.: 22-100-BS-BR/BDLN
Date: APR 2022

FERNANDINA HARBOR
NASSAU COUNTY, FLORIDA
**HYDROGRAPHIC EXAM SURVEY FY22
28, 35 AND 36-FOOT PROJECT**
STA. 28+00 CUT-5 THRU STA. 9+00 CUT-6
PLAN

Scale: AS SHOWN
Drawing no. **7**
SHEET 07 OF 09

MAP LABEL	AIDS TO NAVIGATION	PLANE COORDINATES		LATITUDE	LONGITUDE
		X	Y		
R12*	N12 (04/22)	508.870	2,303.940	30°40'2.84"	81°28'06.64"
R14*	DBN14 (04/22)	507.675	2,302.526	30°39'58.31"	81°28'20.26"

DEPARTMENT OF THE ARMY
JACKSONVILLE DISTRICT, CORPS OF ENGINEERS
JACKSONVILLE, FLORIDA

Designed by: WRM
Checked by: GHR
Date: APR 2022

22-100A-HARBOR
22-100A-SOIL_CSA.DGN
22-100A-SOIL_C7.DGN
22-100A-SOIL_C8.DGN
22-100A-SOIL_C9.DGN
22-100A-SOIL_C10.DGN
22-100A-SOIL_C11.DGN
22-100A-SOIL_C12.DGN
22-100A-SOIL_C13.DGN
22-100A-SOIL_C14.DGN
22-100A-SOIL_C15.DGN
22-100A-SOIL_C16.DGN
22-100A-SOIL_C17.DGN
22-100A-SOIL_C18.DGN
22-100A-SOIL_C19.DGN
22-100A-SOIL_C20.DGN
22-100A-SOIL_C21.DGN
22-100A-SOIL_C22.DGN
22-100A-SOIL_C23.DGN
22-100A-SOIL_C24.DGN
22-100A-SOIL_C25.DGN
22-100A-SOIL_C26.DGN
22-100A-SOIL_C27.DGN
22-100A-SOIL_C28.DGN
22-100A-SOIL_C29.DGN
22-100A-SOIL_C30.DGN
22-100A-SOIL_C31.DGN
22-100A-SOIL_C32.DGN
22-100A-SOIL_C33.DGN
22-100A-SOIL_C34.DGN
22-100A-SOIL_C35.DGN
22-100A-SOIL_C36.DGN
22-100A-SOIL_C37.DGN
22-100A-SOIL_C38.DGN
22-100A-SOIL_C39.DGN
22-100A-SOIL_C40.DGN
22-100A-SOIL_C41.DGN
22-100A-SOIL_C42.DGN
22-100A-SOIL_C43.DGN
22-100A-SOIL_C44.DGN
22-100A-SOIL_C45.DGN
22-100A-SOIL_C46.DGN
22-100A-SOIL_C47.DGN
22-100A-SOIL_C48.DGN
22-100A-SOIL_C49.DGN
22-100A-SOIL_C50.DGN
22-100A-SOIL_C51.DGN
22-100A-SOIL_C52.DGN
22-100A-SOIL_C53.DGN
22-100A-SOIL_C54.DGN
22-100A-SOIL_C55.DGN
22-100A-SOIL_C56.DGN
22-100A-SOIL_C57.DGN
22-100A-SOIL_C58.DGN
22-100A-SOIL_C59.DGN
22-100A-SOIL_C60.DGN
22-100A-SOIL_C61.DGN
22-100A-SOIL_C62.DGN
22-100A-SOIL_C63.DGN
22-100A-SOIL_C64.DGN
22-100A-SOIL_C65.DGN
22-100A-SOIL_C66.DGN
22-100A-SOIL_C67.DGN
22-100A-SOIL_C68.DGN
22-100A-SOIL_C69.DGN
22-100A-SOIL_C70.DGN
22-100A-SOIL_C71.DGN
22-100A-SOIL_C72.DGN
22-100A-SOIL_C73.DGN
22-100A-SOIL_C74.DGN
22-100A-SOIL_C75.DGN
22-100A-SOIL_C76.DGN
22-100A-SOIL_C77.DGN
22-100A-SOIL_C78.DGN
22-100A-SOIL_C79.DGN
22-100A-SOIL_C80.DGN
22-100A-SOIL_C81.DGN
22-100A-SOIL_C82.DGN
22-100A-SOIL_C83.DGN
22-100A-SOIL_C84.DGN
22-100A-SOIL_C85.DGN
22-100A-SOIL_C86.DGN
22-100A-SOIL_C87.DGN
22-100A-SOIL_C88.DGN
22-100A-SOIL_C89.DGN
22-100A-SOIL_C90.DGN
22-100A-SOIL_C91.DGN
22-100A-SOIL_C92.DGN
22-100A-SOIL_C93.DGN
22-100A-SOIL_C94.DGN
22-100A-SOIL_C95.DGN
22-100A-SOIL_C96.DGN
22-100A-SOIL_C97.DGN
22-100A-SOIL_C98.DGN
22-100A-SOIL_C99.DGN
22-100A-SOIL_C100.DGN

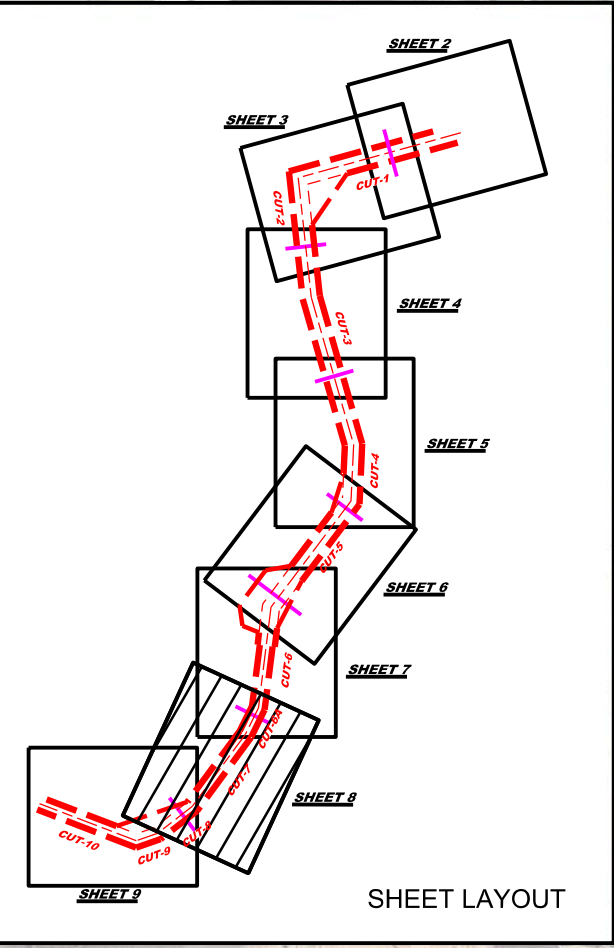
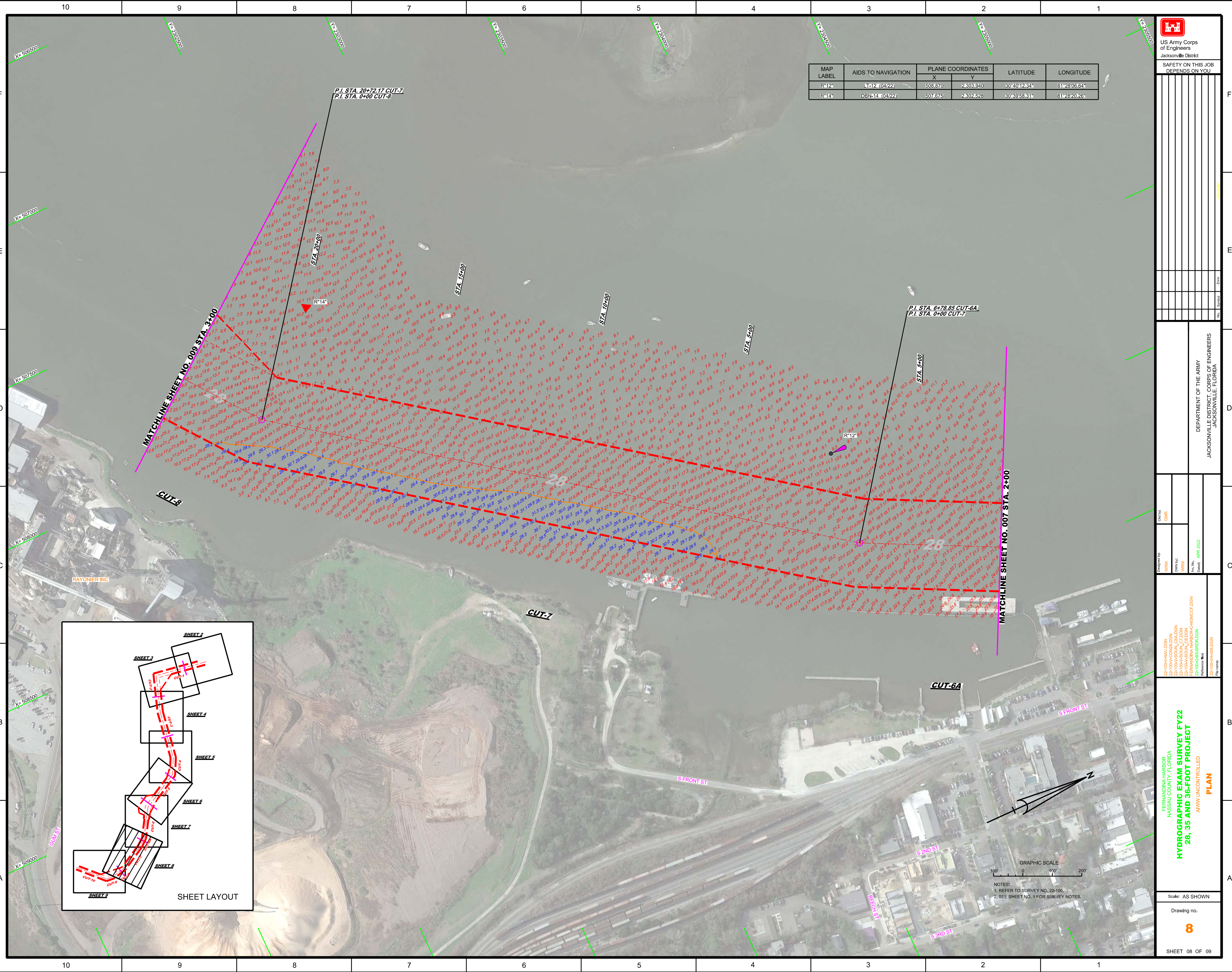
FERNANDINA HARBOR
NASSAU COUNTY, FLORIDA
**HYDROGRAPHIC EXAM SURVEY FY22
28, 35 AND 36-FOOT PROJECT**
AWW UNCONTROLLED
PLAN

Scale: AS SHOWN

Drawing no.

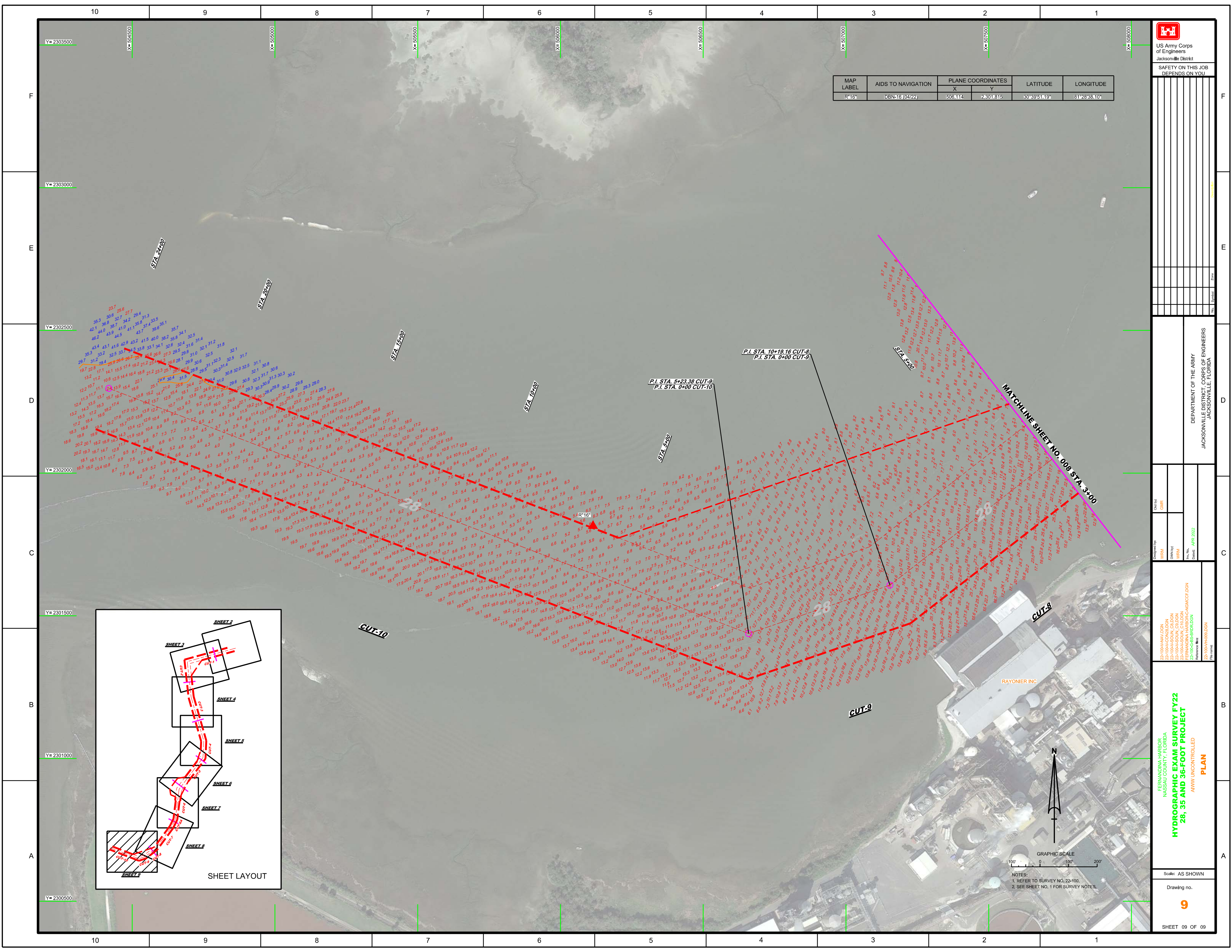
8

SHEET 08 OF 09



GRAPHIC SCALE
0 100 200

NOTES:
1. REFER TO SURVEY NO. 22-100.
2. SEE SHEET NO. 1 FOR SURVEY NOTES.



MAP LABEL	AIDS TO NAVIGATION	PLANE COORDINATES		LATITUDE	LONGITUDE
		X	Y		
R16	DBN-16 (04/22)	506114	2301615	30°39'51.19"	81°28'38.10"

US Army Corps of Engineers
Jacksonville District
SAFETY ON THIS JOB
DEPENDS ON YOU

DEPARTMENT OF THE ARMY
JACKSONVILLE DISTRICT CORPS OF ENGINEERS
JACKSONVILLE, FLORIDA

Designed by: WRM
Checked by: GHR
Drawn by: WRM
Reviewed by: WRM
Date: APR 2022

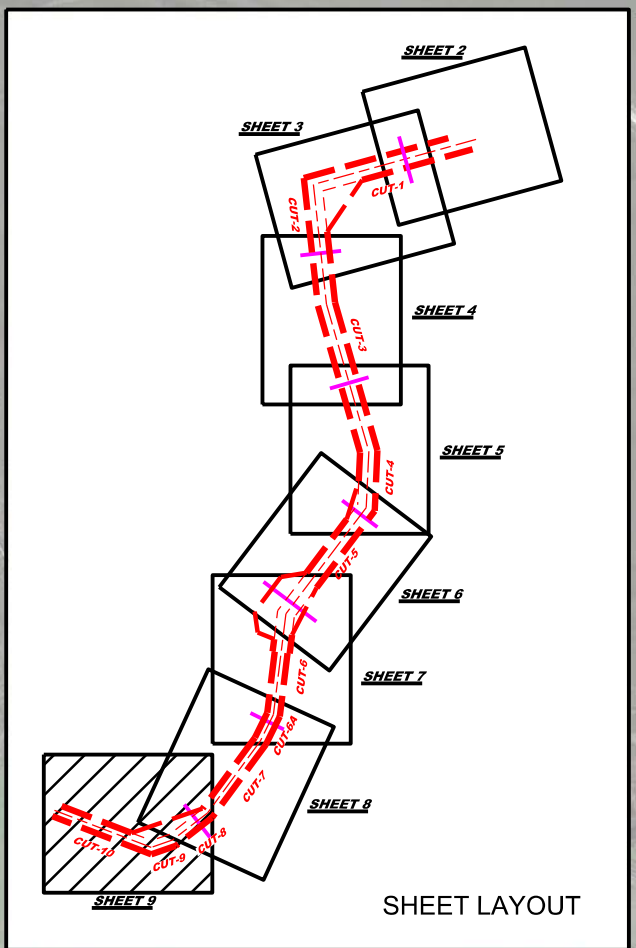
22-100A-HAV-DGN
22-100A-SOUL-FLORIDA
22-100A-SOUL-CALDON
22-100A-SOUL-CALDON
22-100A-SOUL-CALDON
22-100A-SOUL-CALDON

Reference Map:
22-100A-H08-DGN
22-100A-H08-DGN

**HYDROGRAPHIC EXAM SURVEY FY22
28, 35 AND 36-FOOT PROJECT**

AWW UNCONTROLLED
PLAN

Scale: AS SHOWN
Drawing no. **9**
SHEET 09 OF 09



GRAPHIC SCALE
100' 0 100' 200'

NOTES:
1. REFER TO SURVEY NO. 22-100.
2. SEE SHEET NO. 1 FOR SURVEY NOTES.